

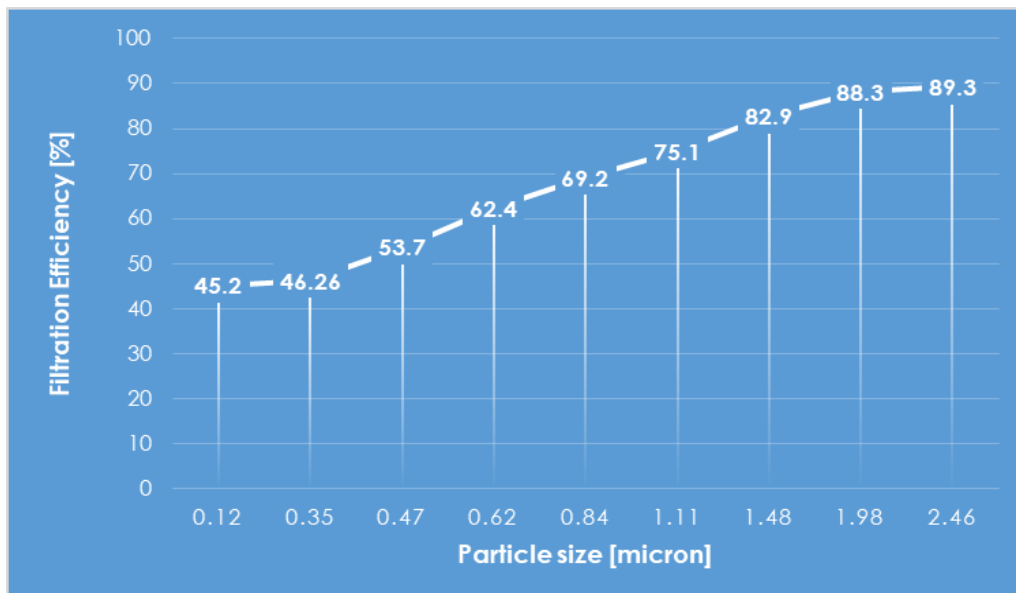
# Technical Specifications

## Nanofibrous Windows Screen

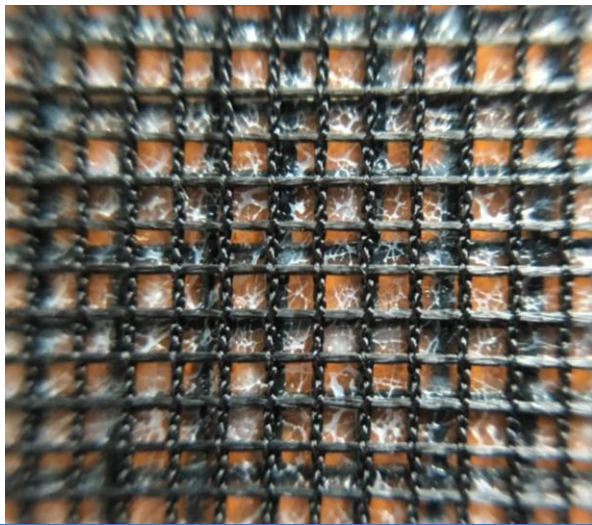
### Nanocleaner Standard Basic\*

Physical properties	Target		Unit
<b>Basis weight</b>	173 ± 2		g/m <sup>2</sup>
<b>Air permeability<sup>1</sup></b>	938 ± 28		mm/s [CSN EN ISO 9237]
<b>Pressure drop<sup>2</sup></b>	13.5 ± 1		Pa @5.33 cm/s
<b>Filtration Efficiency<sup>3</sup></b>	(Particle at 2.5 μm)	89 ± 1	% [EN 1822]
<b>Nanofiber Diameter</b>	120 ± 20		nm
<b>Total thickness</b>	0.47		mm
<b>Standard Dimension of roll</b>	Max:1.5m x 90m Shorter or Longer lengths are upon request		Width x Length
<b>Storage conditions</b>	in a dry, clean, well-ventilated area at room temperatures between 15 to 25° C. Do not wrap rolls with plastic foil.		

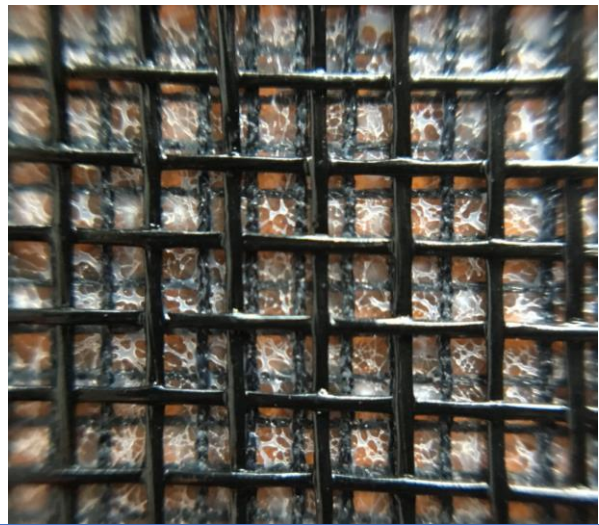
Filtration Efficiency vs. Particle Size [EN 1822]



**Front view of Window screen**

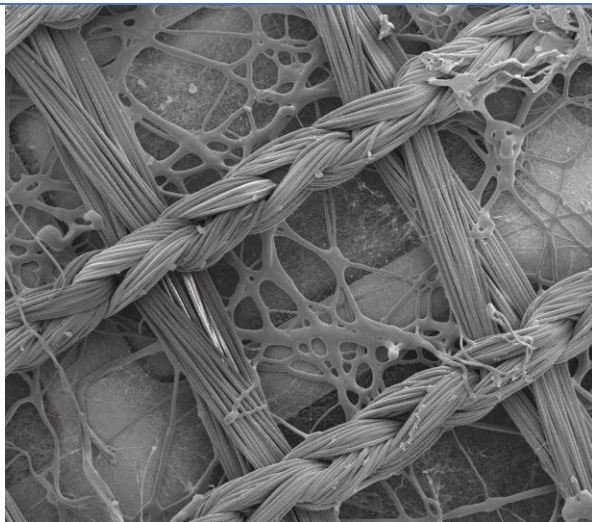


**Rearview of Window screen**

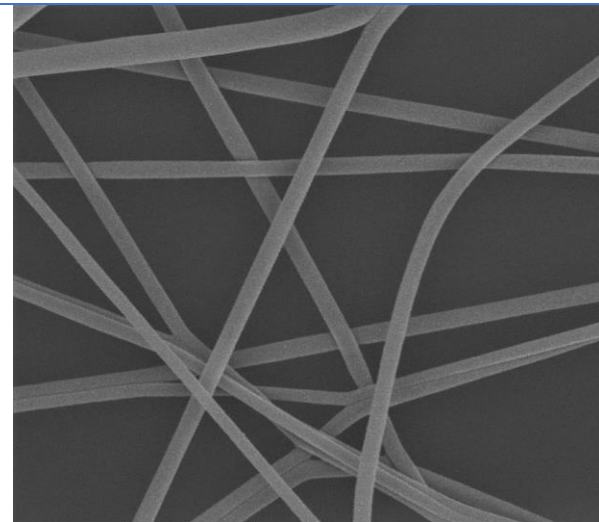


**Scanning Electron Microscope images**

**70 x**



**30,000 x**



**Structure of Window Screen from cross-sectioned view**

- 1. PET Protective fabric**
- 2. Nanofibrous web**
- 3. Fiberglass mesh**



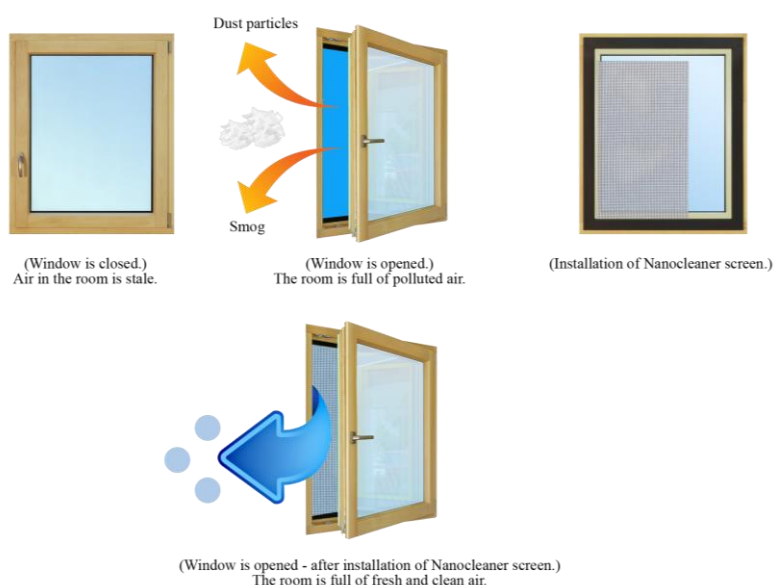
## Advantages of Nanocleaner

- They are designed for excellent protection against smog, dust, soot, pollen, and other particles.
- Suitable for all the environments where health care is essential: houses, schools, public places.
- Blocks for the strong wind.
- High resistance against weather conditions (rain, snow, direct sunlight)

- Waterproof surface (windows can be open on a rainy day)
- Easy handling and maintenance
- Excellent lifetime

## How Nanocleaner Works

Nanocleaner is ready to serve fresh air into your living area as soon as window screens assemblage complete. You can cut the desirable size of the window screen with scissors.



## Cleaning

1. Remove the Nanocleaner product from the window and soak it in a water tank for 10 minutes or lean it 45 degrees and wash it with a shower head from both sides very gently at the temperature between 30 – 40 °C.
2. If needed, apply soapy water up to 30 °C on the outer side (plastic mesh) by only spraying and let the soapy water take effect for about 5 minutes and use low-pressure water to wash or rinse.
3. The Nanocleaner has to be completely dry before installing back to the window.

\*Nanocleaner Standard Basic – The above value is given for informational purposes only.

1. Air permeability performance has been measured according to CSN EN ISO 9237; please ask testing report.
2. Pressure drop has been measured during filtration efficiency test according to EN 1822; please ask for the testing report.
3. Filtration efficiency performance has been measured according to EN 1822, please ask testing report.

