

# Technical data sheet

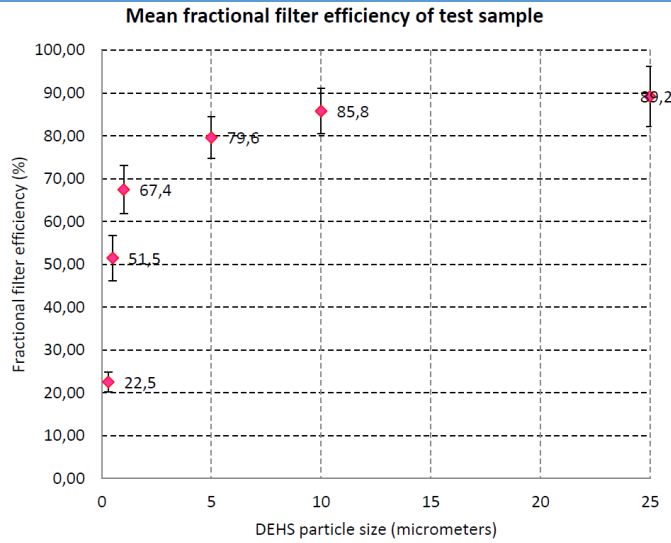
## NANOCLEANER 1600 Basic

Product Identification and Use		
<b>MANUFACTURER:</b>	NAFIGATE Park s.r.o., Andelohorska 419, CZ 46331 Chrastava, Czech Republic IČ: 08555001, data box ID: 6fdd7p4 www.nafigatepark.cz, info@nafigatepark.cz	
<b>PRODUCT IDENTIFIER:</b>	NANOCLEANER 1600 Basic	
<b>PRODUCT CODE:</b>	NC-B16	
<b>COLOUR:</b>	black	
<b>PRODUCT USE:</b>	Window or door mesh for high purity air filtration for home use, optimized for best air permeability and optimal allergen particle retention capability	
<b>PRODUCT DESCRIPTION:</b>	A nanofiber composite designed for filtering air in windows or doors, which creates a barrier preventing the penetration of the smallest objects such as smog, allergens, dust and PM2.5 particles, and at the same time allows the passage of fresh air into the room. Besides fine particle filtering effect, Nanocleaner also excels in heat transfer reduction. Nanocleaner allows for safe ventilation through an open window, decreasing cost of heating and/or air-conditioning and contributing to achieving the Green Deal goal - to reduce energy consumption in buildings.	
<b>PRODUCT STRUCTURE:</b>	PVC - glass fiber mesh / coPES thermo-adhesive WEB / polyvinylidene fluoride (PVDF) nanofibers / PES Protective fabric (anti flammable)	
<b>MAJOR FEATURES → → BENEFITS:</b>	blocks out smog and exhaust fumes from cars captures allergens, pollen, spores and PM <sub>2,5</sub> reduces heat transfer shading direct sunlight	→ reduced dustiness ideal for allergy sufferers, asthmatics, and anybody with respiratory problems lower cost of air-conditioning or heating

Product Properties			
Parameter		Unit	Value
	<b>Basis weight</b>	g/m <sup>2</sup>	<b>173 ± 2</b>
	<b>Total thickness</b>	mm	<b>0,47</b>
	<b>Nanofiber diameter</b>	nm	<b>120 ± 20</b>
	<b>Air permeability</b>	l/m <sup>2</sup> /s @ 200 Pa	<b>&gt;1600</b> <sup>(2)</sup>
	<b>Initial pressure drop</b>	Pa @5.3 cm/s	<b>4,2</b> <sup>(1)</sup>
	<b>Filtration Efficiency - (Particle at 10 µm)</b>	% [EN 16890]	<b>85,7</b> <sup>(1)</sup>
	<b>Filtration Efficiency - (ePM10)</b>	% [ISO 16890]	<b>63,5</b> <sup>(1)</sup>
	<b>Filtration Efficiency - (ePM2,5)</b>	% [ISO 16890]	<b>56,4</b> <sup>(1)</sup>
	<b>Filtration Efficiency - (ePM1)</b>	% [ISO 16890]	<b>50,7</b> <sup>(1)</sup>

Delivery units and Storage conditions		
<b>UNITS:</b>	Roll on Europallet 2. Can be delivered either in full total roll width, or sliced on request	
<b>SIZE:</b>	Width: Length <sup>(3)</sup> : Outer diameter: Weight: Core diameter:	<b>role:</b> total (full) 150 cm 90 lin.m (or shorter on request) max. approx. 27 cm max. approx. 26 kg 76 mm (3")
<b>STORAGE:</b>	storage life is 24 months, in the original packaging, in a dry, clean, well-ventilated area at room temperatures of 15-25°C. Do not wrap rolls with plastic foil, do not store in the direct sunlight.	

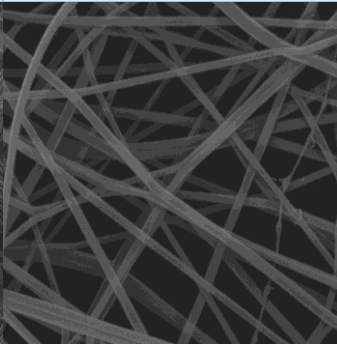
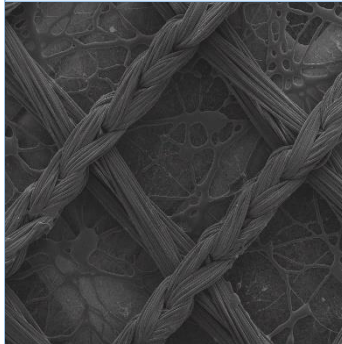
### Size resolved filtration efficiency <sup>(1)</sup>



### Microscope images

**5.000 x**

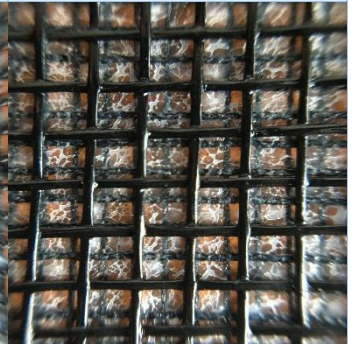
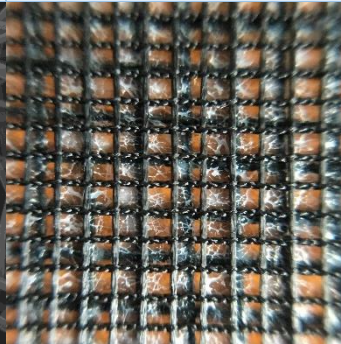
**30.000 x**



### Product images

**indoor (clean) side**

**outside air raid side**



The data presented in this data sheet are based on currently available knowledge. The information contained herein is presented for information purposes only and does not release the user from the responsibility to confirm the data and suitability by their tests. NAFIGATE Park assumes no liability. Our products are constantly evolving, so we reserve the right to change the information contained in this document at our discretion. For questions concerning product quality and safety, please contact the address provided above or [info@navigatepark.cz](mailto:info@navigatepark.cz).

<sup>(1)</sup> according to test report from CXI Institute for Nanomaterials and Advanced Technologies and Innovations TUL – Czech Rep.

<sup>(2)</sup> according to internal measurement on Palas PMFT 1000 and/or TexTest FX 3500 Combiscan Test rigs

<sup>(3)</sup> guide value, which may vary depending on the length of the roll from the mesh supplier